

Power Platform Governance



This document is a **quick reference guide**, providing the key elements to define a successful governance strategy for the Microsoft Power Platform.

It is not considered as exhaustive, and should be accompanied by proper guidance from cloud governance experts.



governanceintroduction



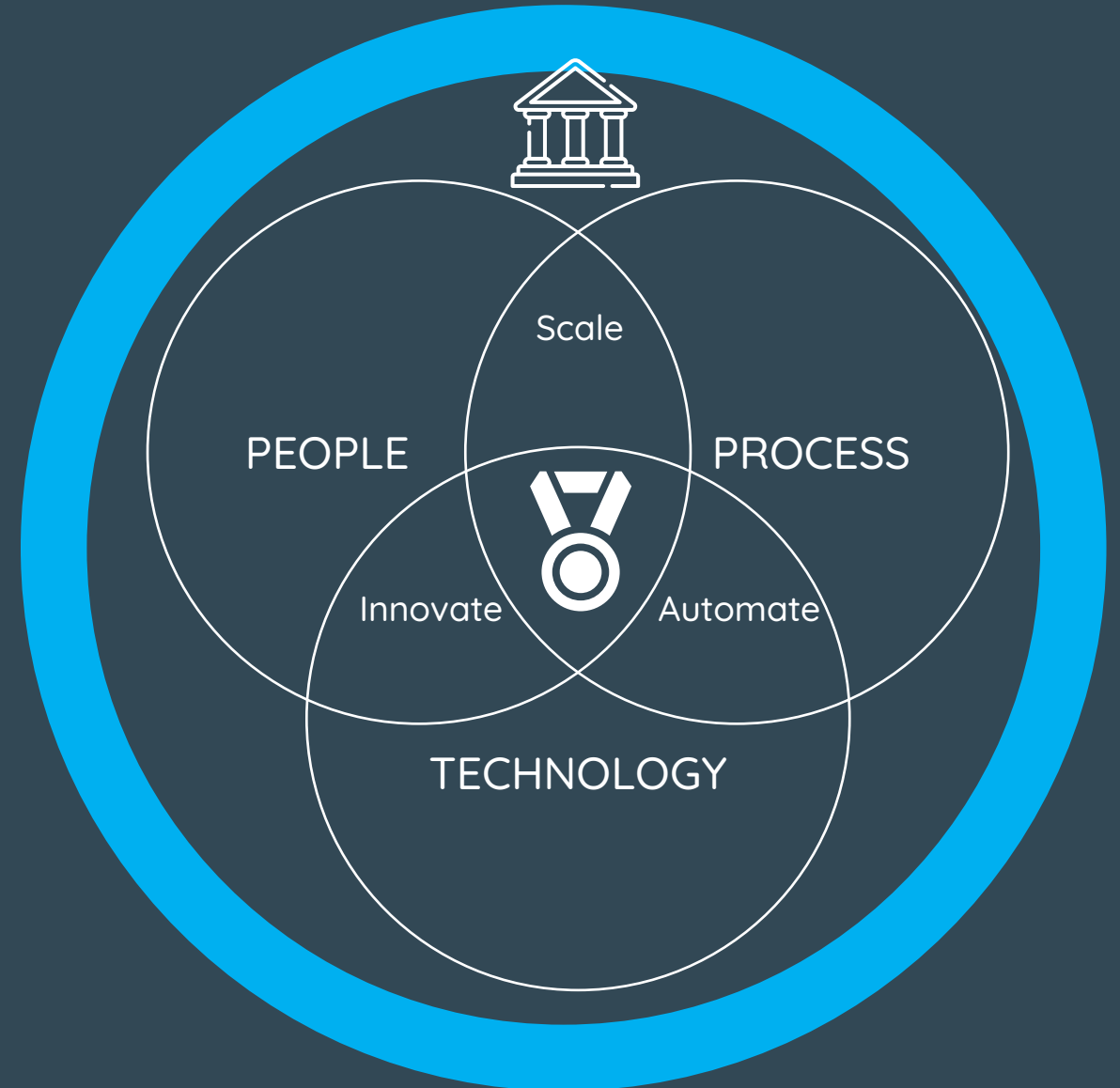
Cloud governance is a **framework** to govern the use of cloud services

Because cloud adoption encompasses **people, process and technology**

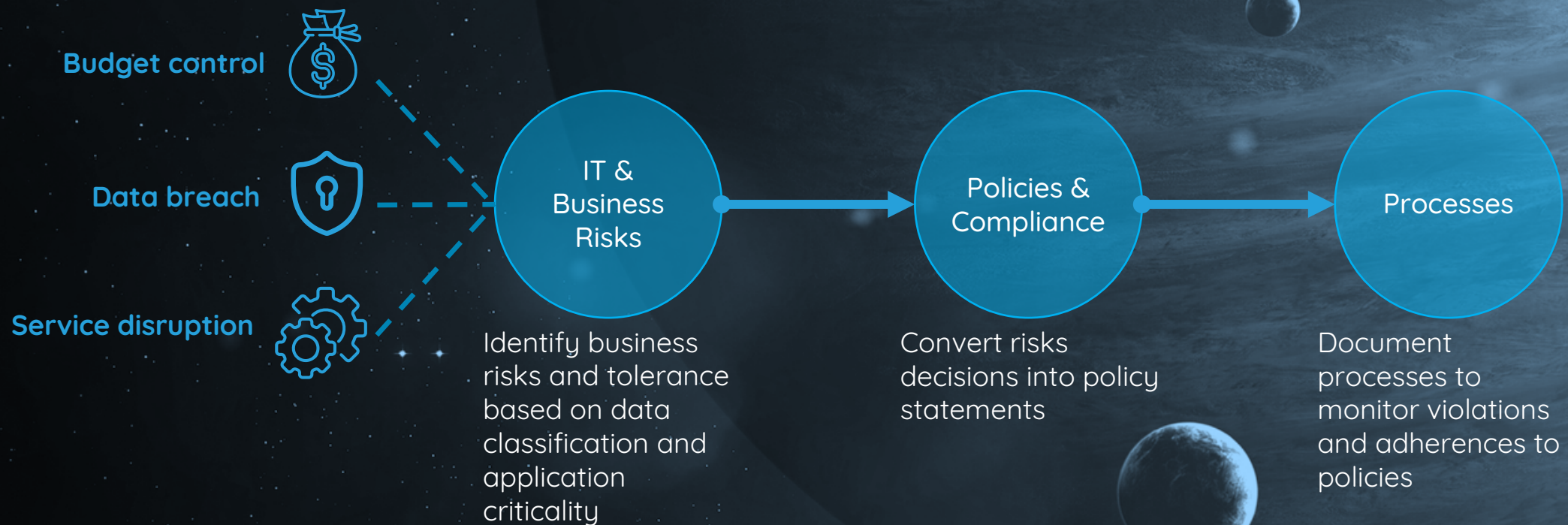
The success of your governance is the combination of:

1. Your ability to propose a “self service” approach
2. The control you maintain on security, cost management, and deployment operations

Cloud Governance



Cloud governance framework





powerplatformgovernance



© 2021 by Stellium

This document should not be copied or reproduced.

Recapitulation of the products

GOVERNABLE, AUTOMATABLE, AUDITABLE, AND MANAGEABLE

Dynamics 365



Office 365



Azure



Your business apps & data



Power BI

Business
Analytics



Power Apps

Application
Development



Power Automate

Process Automation



Power Virtual Agents

Intelligent Virtual Agents



Data connectors



AI Builder



Dataverse



© 2021 by Stellium

This document should not be copied or reproduced.

Step-by-step Governance



ALM, Support and demand will be treated in a future guide.





positioning



What are the types of scenario we want to provide in our organization?

Types of scenarios

○ Individual/Team Productivity Apps

- ✓ Self-service scenarios
- ✓ End user or small teams



Automate simple, repetitive tasks

○ SharePoint and Teams Apps

- ✓ Embedded scenarios
- ✓ Medium to large teams



Capture data and automate processes from team spaces

○ Line of Business Apps

- ✓ Advanced scenarios
- ✓ Business process stakeholders



Execute advanced business processes with master data






roles



Who will ensure the success of our strategy?



Roles and responsibilities

○ Low-code strategy team

- ✓ Define low-code strategy
- ✓ Define adoption & change mgt

○ Admin team

- ✓ Define governance
- ✓ Manage users, licensing and capacity
- ✓ Make data available (connectors, integration, or migration)

○ Center of Excellence

- ✓ Design, build and roll-out apps

Internal and external experts

- Central IT
- App and flow makers
- DevOps teams
- Support teams
- Adoption teams





environments



© 2021 by Stellium

This document should not be copied or reproduced.

Environments strategy

Default Environment



Power Apps



Power Automate



Power Virtual Agent



Microsoft Dataverse

Tenant



Azure Active Directory Users

Teams Environment #1



Power Apps for Teams



Power Automate for Teams



Power Virtual Agent for Teams



Microsoft Dataverse for Teams

Prod - Sales

Prod - Marketing

Prod - Service



Sandbox - App#1

Sandbox - App#2

Prod - App#1



Teams Environment #2



Power Apps for Teams



Power Automate for Teams



Power Virtual Agent for Teams



Microsoft Dataverse for Teams

Environments types

Default

Limited control

All licensed users have the Environment Maker role

Production

Full control

Used for permanent work

Sandbox

Full control

Used for development and testing

Trial

Full control

Expire after 30 days and are limited to one user

Developer

Full control

Only a single user account with the Community Plan has access

Dataverse for Teams

Limited control

Automatically created when you create an app in Teams using the Power Apps app



How do we setup our environments?



Default (default)

Used for personal productivity and SharePoint apps

For all users of the organization

Development (production)

Used to build apps for identified initiatives or areas of explorations

For developers

Pre-production (production)

Used to test apps for UAT purpose

For testers

Production (production)

Used to run business applications

For end users

Dataverse for Teams

Environments to build apps for Teams, linked to Teams spaces

For Teams users



Who can build and update our architecture?

Provisioning

Do we enable self-service creation of production, sandbox and trial environments?

- ☐ Yes, every user can generate a Power Platform environment
- ☐ No, we will limit to administrators

Do we enable self-service creation of Teams environments?

- ☐ Yes, every user can build apps for Teams and generate environment
- ☐ No, we will control who has access to the app via Teams policies





security



Key roles and responsibilities

RESOURCE	ENVIRONMENT MAKER	SYSTEM CUSTOMIZER	SYSTEM ADMIN
Canvas app	X	-	X
Cloud flow	X (non-solution aware)	X (solution aware)	X
Connector	X	-	X
Connection	X	-	X
Data gateway	X	-	X
Dataflow	X	-	X
Dataverse tables	-	X	X
Model-driven app	-	X	X
Solution framework	-	X	X
Desktop flow	-	X	X
AI Builder	-	X	X



Admins and makers

Who can administer environments and build apps?

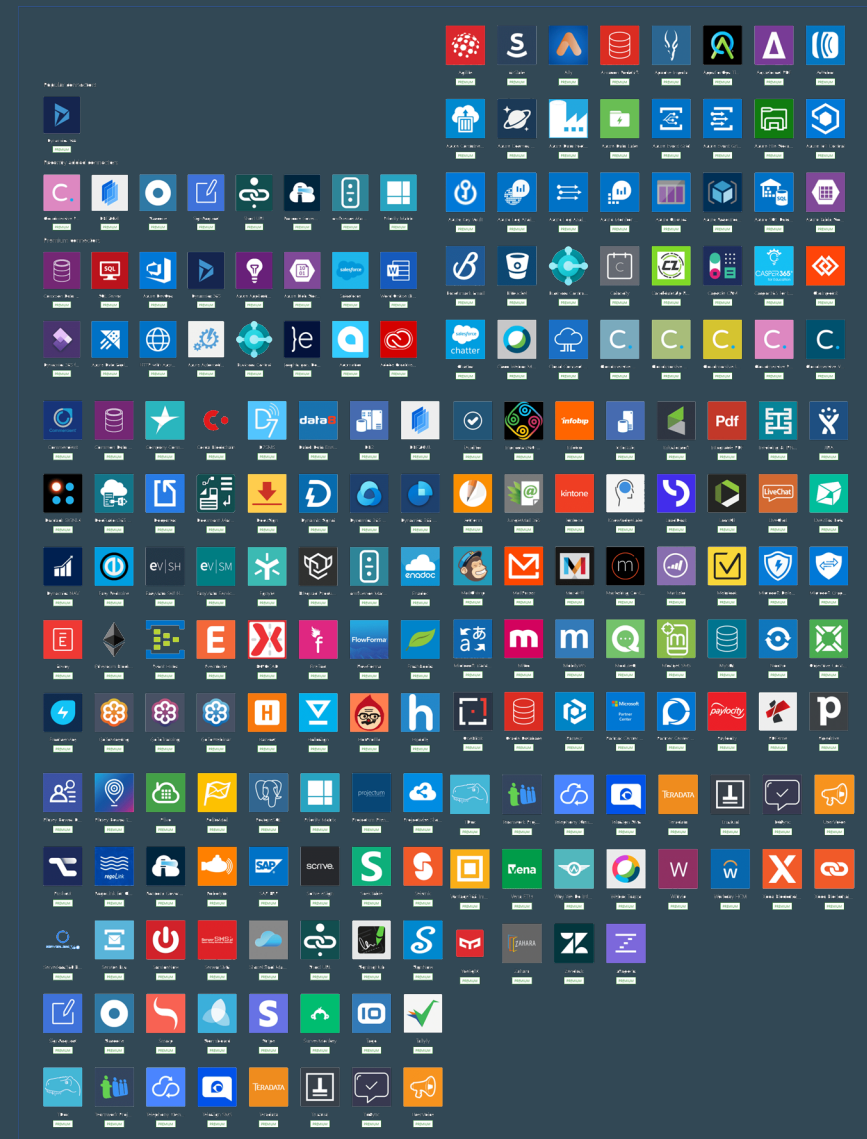
ENVIRONMENT	ENVIRONMENT MAKER	SYSTEM CUSTOMIZER	SYSTEM ADMIN
Default: Personal Productivity and SharePoint	All users	Power Platform Admins Service providers	Power Platform Admins
Development	Developers only Service providers	Developers only Service providers	Power Platform Admins
Pre-production	Developers only	Developers only	Power Platform Admins
Production	Power Platform Admins	Power Platform Admins	Power Platform Admins
Dataverse for Teams	Teams owners and members	Teams owners and members	Teams owners



Limit connectors available in your environments!

Create data loss prevention (DLP) policies to help prevent users from unintentionally exposing organizational data.

Data loss prevention policies



Data loss prevention

What connectors do we enable in our organization?

Default

For personal and SharePoint apps

Block all connectors except Microsoft ones

No premium allowed

Development

For development and test purpose

Enable all connectors

Pre-production

For UAT purpose

Block all connectors except Microsoft ones

Enable “case by case”

Production

For production

Block all connectors except Microsoft ones

Enable “case by case”

Dataverse for Teams

Block all connectors except Microsoft ones

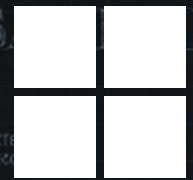
No premium allowed





licensing





Microsoft 365

By default, PowerApps & Automate are included in the Office 365 plans.

Using these products with the default O365 subscription has the following limitations:

Included with Office 365

POWER APPS LIMITATIONS

- No model-driven apps
- No access to custom portals
- No premium & custom connectors
- No on premise data gateway
- No Dataverse access
- No custom entities
- 2000 daily API requests (per license)

POWER AUTOMATE LIMITATIONS

- No business process flows (state machine)
- No premium and custom connectors
- No on premise data gateway
- No Dataverse access
- 2000 daily API requests (per license)

Additional standalone plans (Premium)

To leverage the full potential of Power Apps and Automate, you can purchase standalone licenses (on top of the Office 365) for each product.

What's not "free"

POWER APPS STANDALONE PLANS

Per user, per app (\$10/month)

Allow individual users to run applications for a specific business scenario based on the full capabilities of Power Apps

Per user (\$40/month)

Equip users to run unlimited applications based on the full capabilities of Power Apps

POWER AUTOMATE STANDALONE PLANS

Per user (\$15/month)

Allow individual users to create unlimited flows based on their unique needs

Per flow (min. 5 purchase) (\$500/month)

Implement flows with reserved capacity that serve unlimited users across an organization



Makers and admin licenses

How to license admins and makers of apps?

Default

For personal and SharePoint apps

O365 use right only

Development

For development and test purpose

O365 use rights
OR
Premium

Pre-production

For UAT purpose

O365 use rights
OR
Premium

Production

For production

O365 use rights
OR
Premium

Dataverse for Teams

O365 use right only

Limited set of users have “PowerApps per user” or “Power Automate per user” plans to build advanced solutions (controlled with security groups)



App passes

How to license “Premium apps” to end users?

Development	Pre-production	Production
For development and test purpose	For UAT purpose	For production
<u>No “app passes”</u>	<u>Limited “app passes”</u>	<u>Controlled app passes</u>
	<u>Testers only</u>	<u>End users only</u>



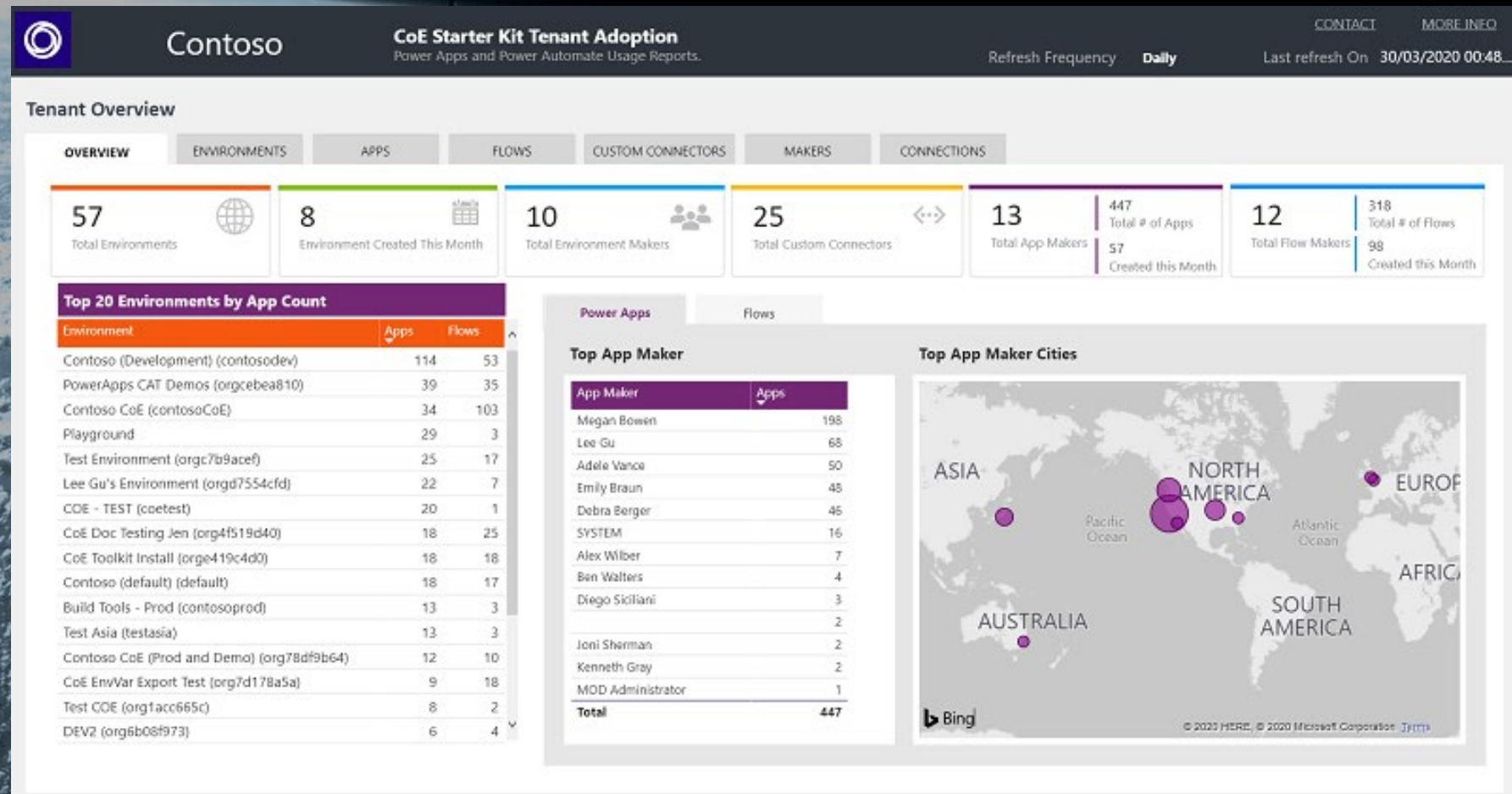


monitor



Monitoring tools

How to monitor the evolution of our platform?



conclusion



Key takeaways

1. Define your platform's positioning

All your governance is based on what you offer. Without clear positioning, there are no clear risks

2. Identify the talents in your organization

Your center of excellence is the backbone of your strategy. Former SharePoint developers, new hires, business users. Everyone is a good candidate to help you build and support the platform.

3. Build your environment architecture

Your solutions will not be the same in every environment. Your governance will differ from one environment to another.



4. Identify risks and document policies by environment

Environments will host different types of solutions. Will be accessed by different populations (users and makers). Risks and policies will be different.

5. Implement settings and processes to ensure you comply with your policies

Make sure you implement the right settings. Do not let everything open. Do not rely on monitoring and be proactive.

6. Communicate your governance plan

Document every decision you make (rule, impact, decision) Make sure people are aware of these rules. Do not confuse your governance plan with your installation guide!



Let's Go?

Contact us

For any questions or additional information:

jaime.seita@stellium.consulting

Stellium Sàrl
Route Suisse 8A
1163 Etoy
www.stellium.ch

